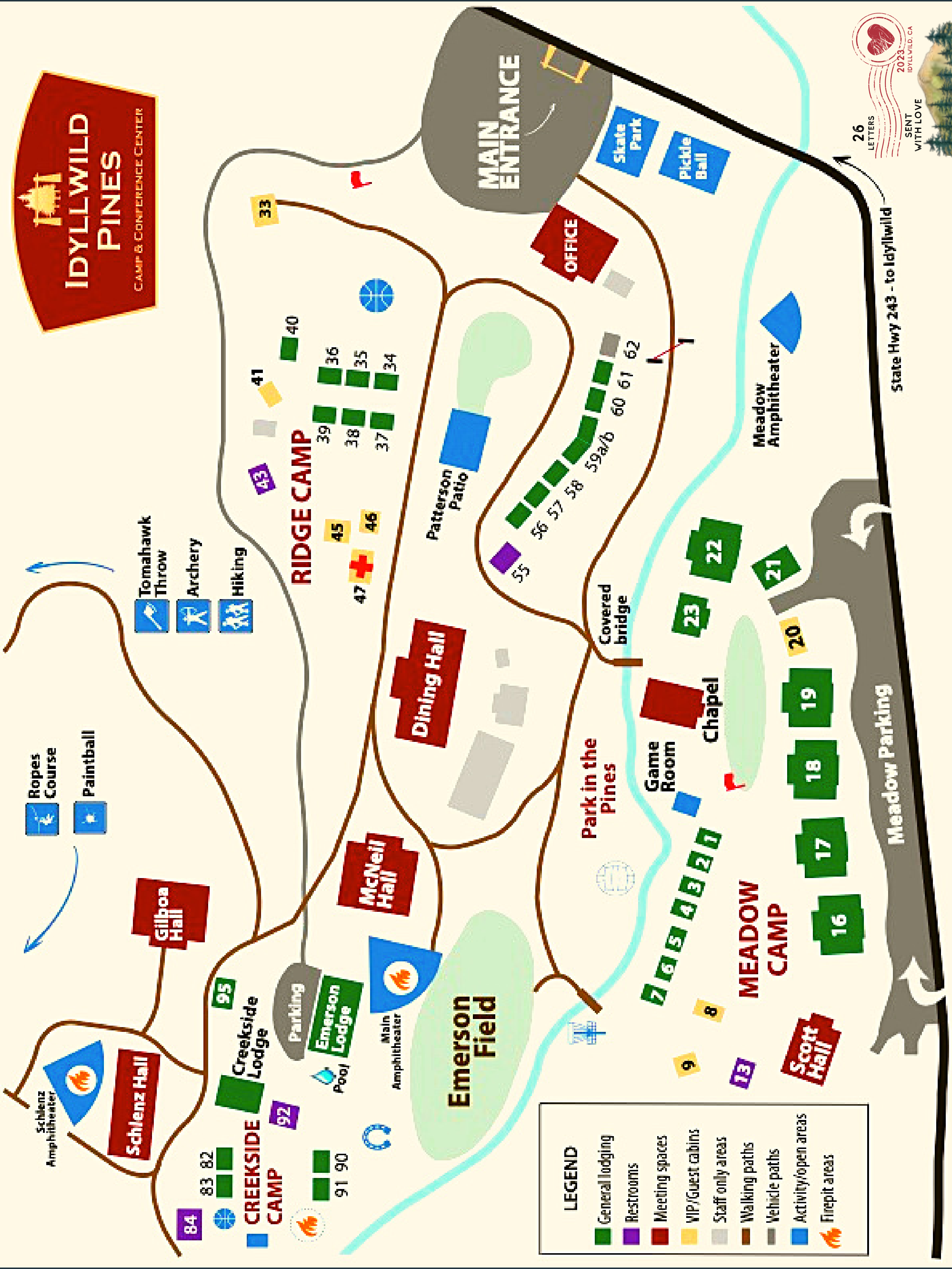
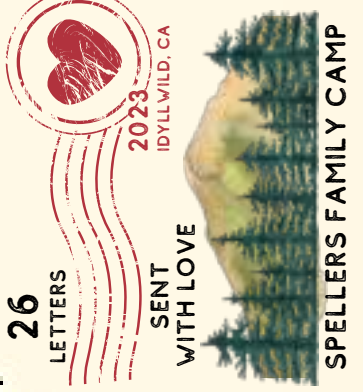


IDYLLWILD PINES

CAMP & CONFERENCE CENTER



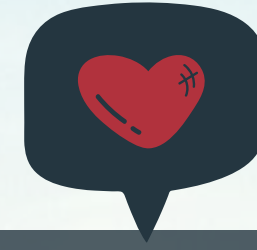
LEGEND	
	General lodging
	Restrooms
	Meeting spaces
	VIP/Guest cabins
	Staff only areas
	Walking paths
	Vehicle paths
	Activity/open areas
	Firepit areas



State Hwy 243 - to Idyllwild

DIRECTIONS & ARRIVAL INSTRUCTIONS

IDYLLWILD PINES CAMP & CONFERENCE CENTER
26375 CA-243, IDYLLWILD, CA 92549



You can access directions to Idyllwild Pines camp at www.idyllwildpines.org/directions/

Some mapping apps will take you to the meadow camp entrance which is located across from Idyllwild Elementary. You don't want this entrance.

Instead, you want the main entrance that is towards town (left, if you are pulling out of meadow camp parking lot). At the main entrance you will see a huge log across two large rock pillars with a sign that says Idyllwild Pines Camp. Turn in there!

If you have come up from Banning, the camp will be on your right. If you have passed through Mountain Center, the camp will be on your left.

Our group will be checking you in at the front parking area at 11:00am and showing you where to go.

If you need further assistance, or are running late, please text or call Pearl 805-551-9018.

If you have a late arrival, you can also check the schedule to see where staff is.

Upon check-in you will receive your camp name tags, room keys, directions to important areas around camp, and a super huge welcome with smiles!